

WTE20

TRYMAX
Mould Temperature Controller

●Capacity

Power		3-phase,200V,60Hz	3-phase,220V,60Hz	3-phase,200V,50Hz
Temperature range *1		Supplied water temperature + 10 to 90 °C		
Temperature control accuracy *1		Preset temperature ± 1 °C		
Pump	Electric capacity	0.74 kW		0.43 kW
	Flow capacity	3.0 m³/h at a head of 44 m		3.0 m³/h at a head of 28 m
Heater	Electric capacity	4.13 kW	5.00 kW	4.13 kW
	Cooling capacity *2	9.42 kW (33.9 MJ/h)		

*1 The temperature of medium is measured by us with a temperature indicator controller used during no-load operation.

*2 This capacity is achievable when the machine is fed with cooling water of which the temperature is lower than that of the medium by 45 °C and run in the state that the pressure difference between the water supply side and the water drain side is 0.2 MPa.

●Standard specifications

Medium		Clean water (soft water)	
Pump		Mechanical seal type	
Heater	Tank material	FC200 + Electroless nickel plating	
	Tank capacity	1 L	
Cooling	Method	Direct cooling by direct supply of clean water	
Temp. control	Setting / Display	Digital setting / Digital display	
	Control method	PID control for heating/cooling	
	Sensor *3	Thermocouple (J)	
Start timer *4		Subtractive timer, 00 h:01 m—99 h:59 m	
Piping connection	Cooling water supply port *5	Hose nipple, ϕ 10.5 mm	
	Cooling water drain port *5	Hose nipple, ϕ 10.5 mm	
	Medium feed port *5	Hose nipple, ϕ 10.5 mm: 2 pieces	
	Medium return port *5	Hose nipple, ϕ 10.5 mm: 2 pieces	
Safety device	Error contents	Safety device : Error notification mode	
	Earth leakage	Earth leakage circuit breaker	Power OFF
	Overload	(with overload protector)	
	Reversed phase	Reverse phase protection relay	Alarm lamp + Buzzer + Operation stop
	Overheat	Overheat protector	Alarm lamp + Buzzer + Operation stop
	Level low	Level switch	Alarm lamp + Buzzer + Operation stop
	Pump overload	Overload relay	Alarm lamp + Buzzer + Operation stop
	Maximum temperature	Control panel (with standby function)	Alarm lamp + Buzzer
	Minimum temperature	Control panel (with standby function)	Alarm lamp + Buzzer
	Sensor breaking	Control panel	Alarm lamp + Buzzer + Operation stop
	Heatup error	Control panel	Alarm lamp + Buzzer + Operation stop
	Power failure *4	Control panel	Timer lamp blinking + Buzzer + Operation stop
Paint colour *6		A45-90A (Gloss)	

*3 The sensor type may be changed according to the customer's request.

*4 If power failure occurs after the (subtractive) start timer has been set, the timer start is disabled even if the power supply is restored, to prevent accident.

*5 The connector type may be changed according to the customer's request.

*6 The colour (paint colour) may be changed according to the customer's request.

●Accessories *7

Power cord	5 m
Circulation line hose	ϕ 9.5 mm, 3 m long, heat-resisting hose: 4 pieces
Hose band	Hose band for ϕ 9.5 mm hose: 8 pieces

*7 The type, size or quantity of the accessories may be changed according to the customer's request.

●Utilities

Power	3-phase,200V,60Hz	3-phase,220V,60Hz	3-phase,200V,50Hz
Electric capacity	4.87 kW	5.74 kW	4.56 kW
Rated current	15.3 A	16.7 A	15.6 A
Circuit breaker capacity	20 A		
Air	Not required		
Cooling water	0.6 m³/h		
External dimensions *8	250 × 453 × 590 mm (W×D×H)		
Weight *9	45 kg		

*8 Pipes to the machine are not included.

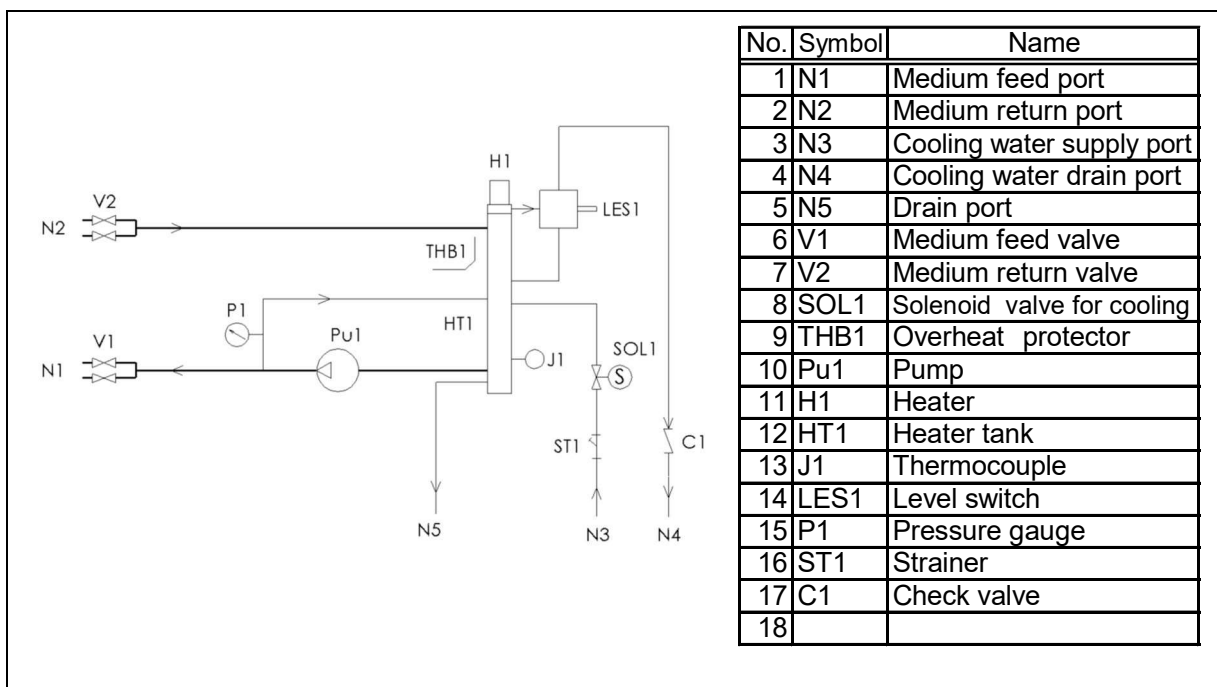
*9 Weight of a standard model

WTE20

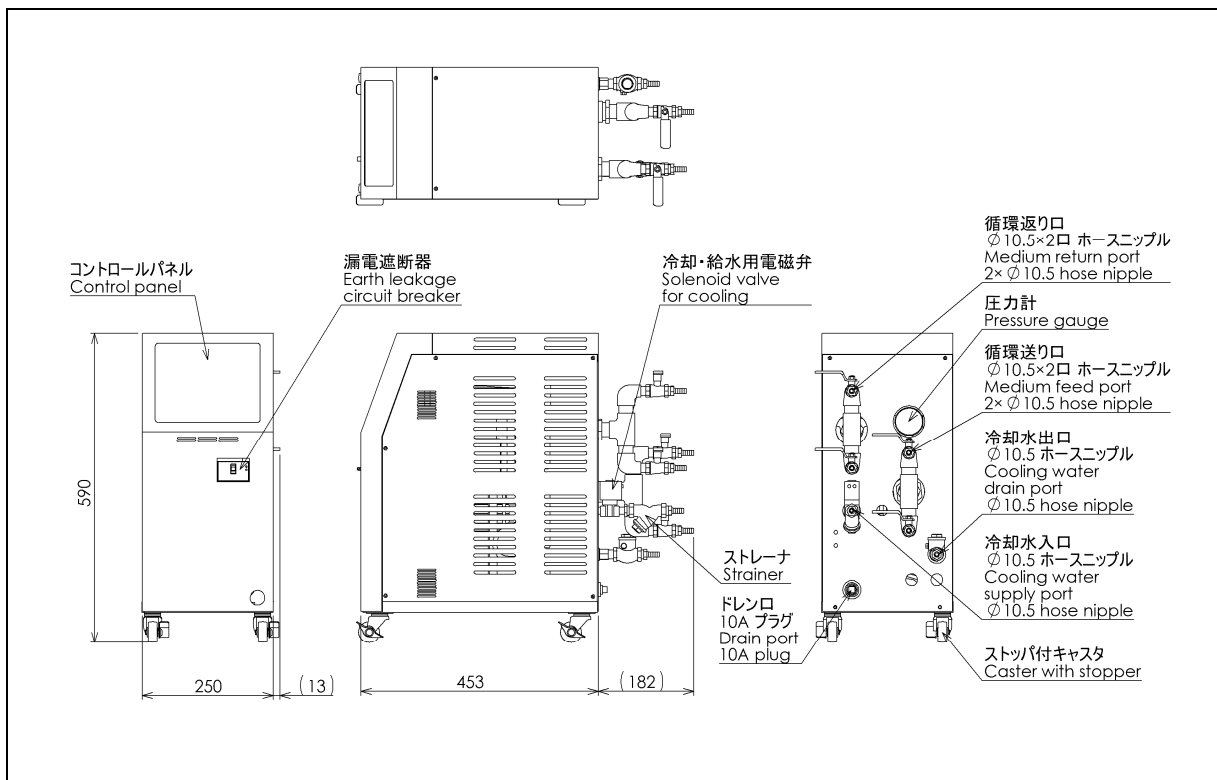
TRYMAX

Mould Temperature Controller

●Flow



●Outline view



□ Specification may be changed without prior notice.

NAKAMURA