

# PLB201

**High auto loader**

## ● Capacity

Power		3 phases 200 V 60 Hz	3 phases 220 V 60 Hz	3 phases 200 V 50 Hz
Blower capacity	Output	1.75 kW	1.75 kW	1.50 kW
Carry performance *1		410 kg/h		

\*1 It is the value which used of bulk specific gravity 0.65 g/cm<sup>3</sup> virgin material for level 9 m and perpendicular 3 m and Ø 38 mm hose piping, and was measured in our company.

And this value is the case where a supply place is a vacuum cyclone PS1. (at 60 Hz)

## ● Standard specifications

Dust collecting method	Body	Dust filter box	
	Filter	Dust filter	
Safety device	<b>Error contents</b>	<b>Safety device</b>	<b>Error notification mode</b>
	Earth leakage	Earth leakage circuit breaker (with overload protector)	Power OFF
	Overload		
	Phase reversal	Reverse phase protection relay	Display lamp+Operation stop
	Blower motor overload	Overload relay	Display lamp+Operation stop
	Clean Filter	Notification timer	Display lamp
Colour *2	A45-90A (Gloss)		

\*2 The colour (paint colour) may be changed according to the customer's request.

## ● Accessories

Power cord	3.5 m
Hose	Ø38 mm x 20 m (L) (without earth wire)
Hose band	4 pieces for Ø 38 mm hose

## ● Utilities

Power		3 phases 200 V 60 Hz	3 phases 220 V 60 Hz	3 phases 200 V 50 Hz
Electric capacity		1.75 kW	1.75 kW	1.50 kW
Rated current		7.5 A	7.1 A	5.9 A
Earth leakage circuit breaker capacity		15 A		
Air	Pressure	Not required		
Size		W 536 × D 529 × H 1147 (mm)		
Weight *3		60 kg		

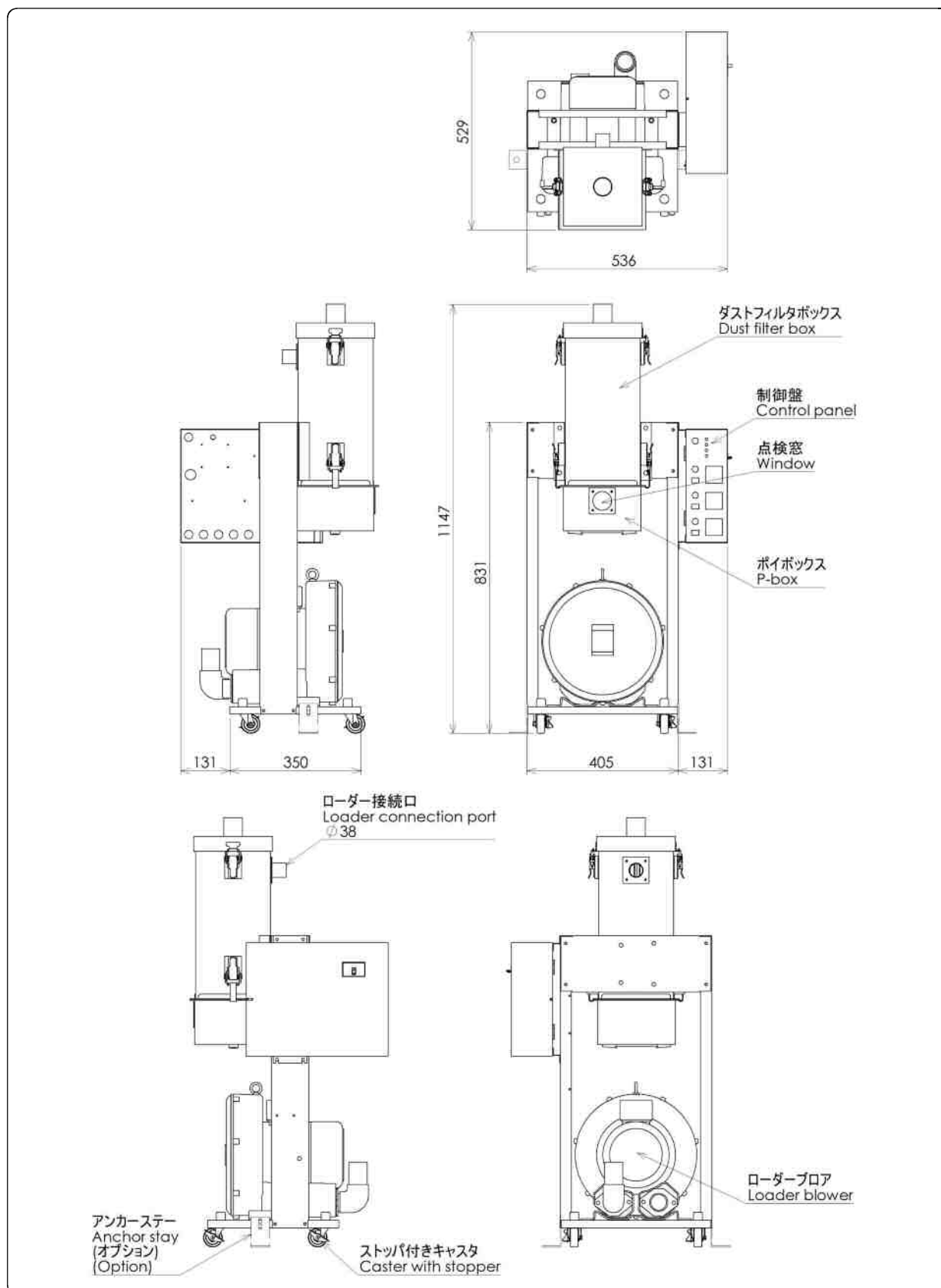
\*3 Weight of a standard model

□ Specification may be changed without prior notice.

# PLB201

## High auto loader

### ● Outline view



□ Specification may be changed without prior notice.

**NAKAMURA**